

Pratico

Cleaning has never been so easy.



watch the video and see how PRATICO works



Unparalleled practicality.

Faster and simpler cleaning.

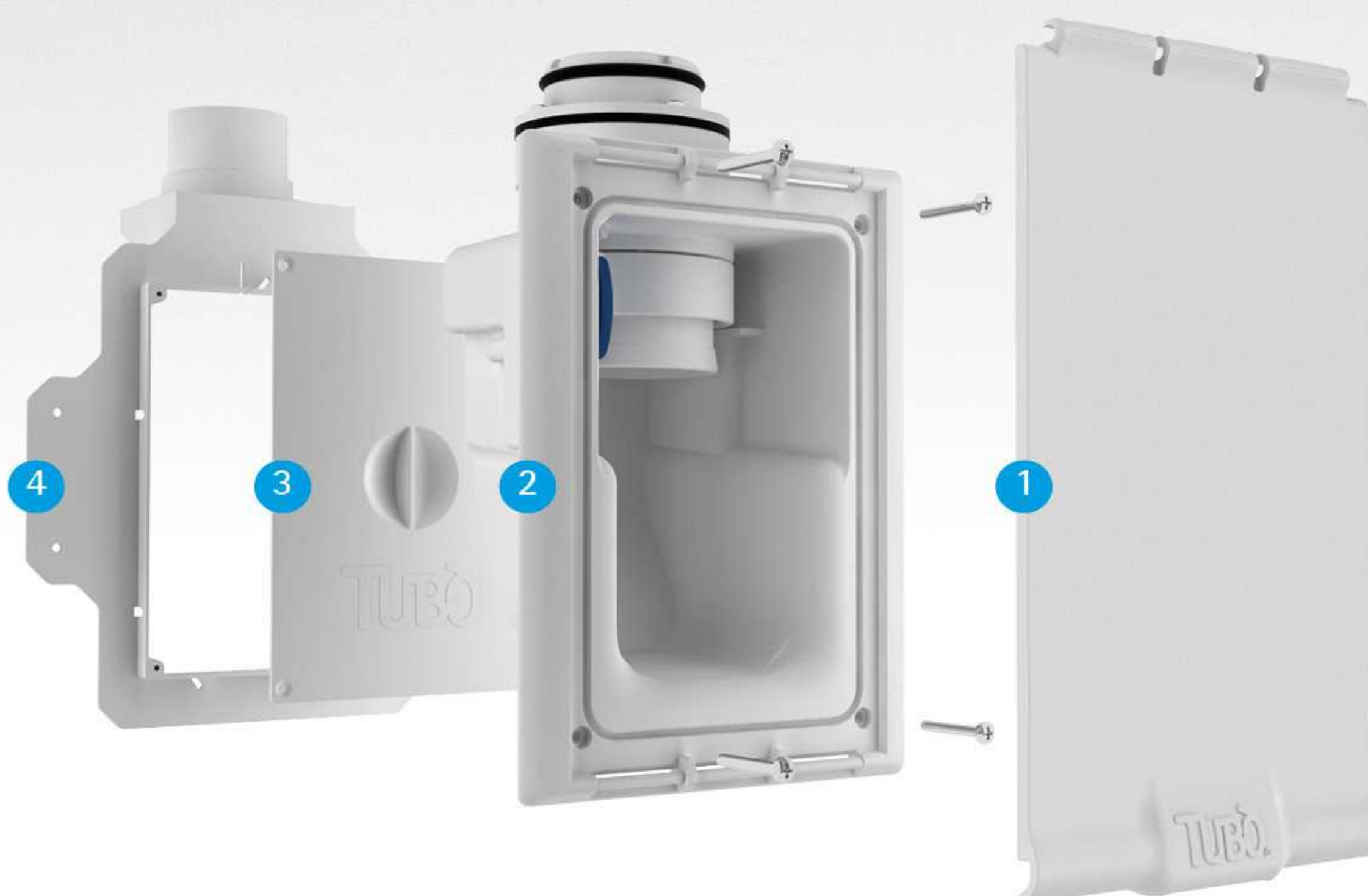
PRATICO is a new solution for simplifying the cleaning of rooms equipped with the TUBÒ centralised vacuum system, making cleaning even easier.

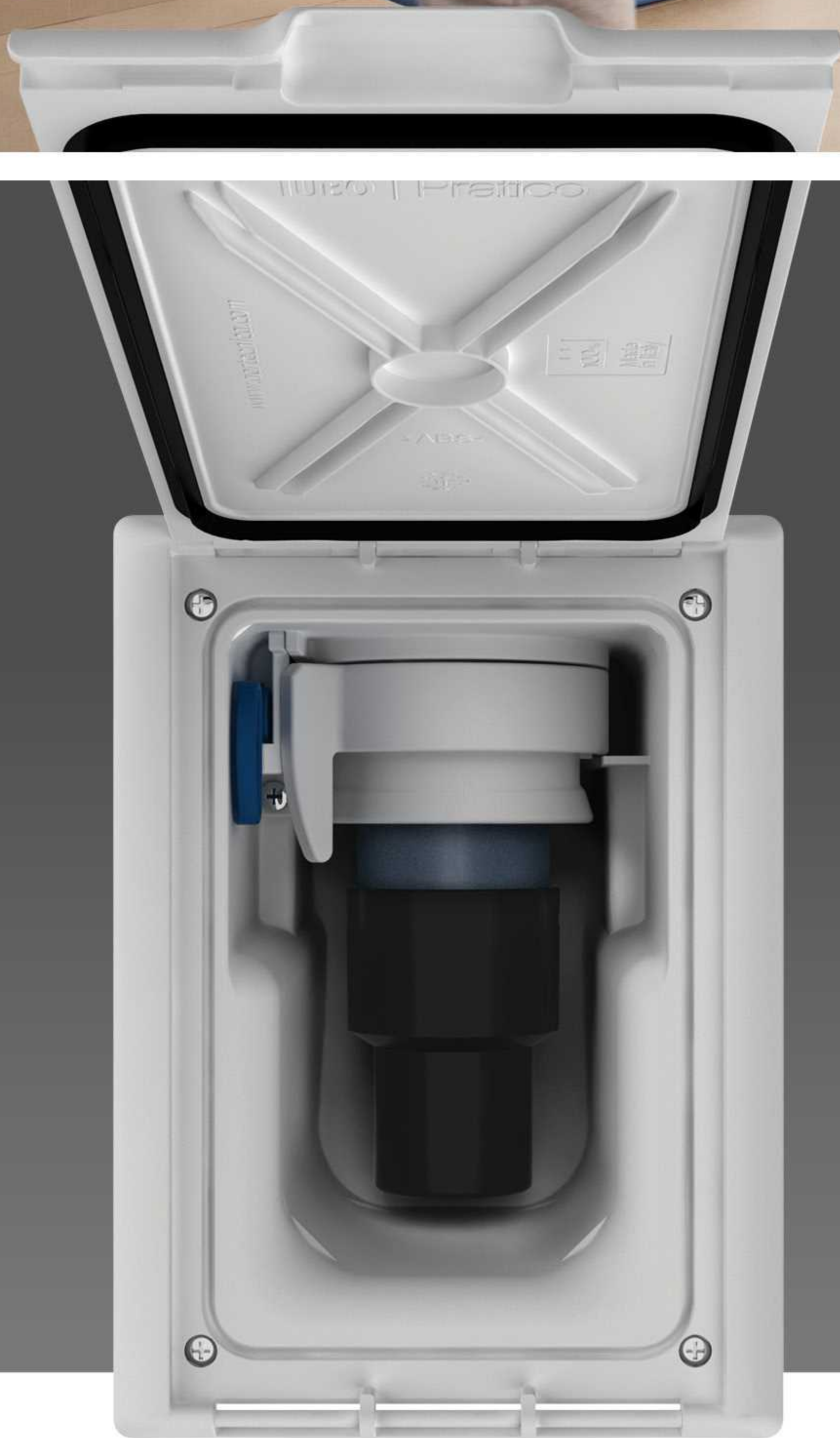
PRATICO is the natural evolution of the TUBÒ vacuum system. The flexible hose used for cleaning is concealed inside the wall of your home. An entire vacuum system in a single socket.

Pratico is comprised of:

Features

1. Reversible flap that can be painted
2. Reversible PRATICO socket
3. Temporary cover for installation
4. PRATICO socket frame for plasterboard walls





Pratico

The advantages of PRATICO

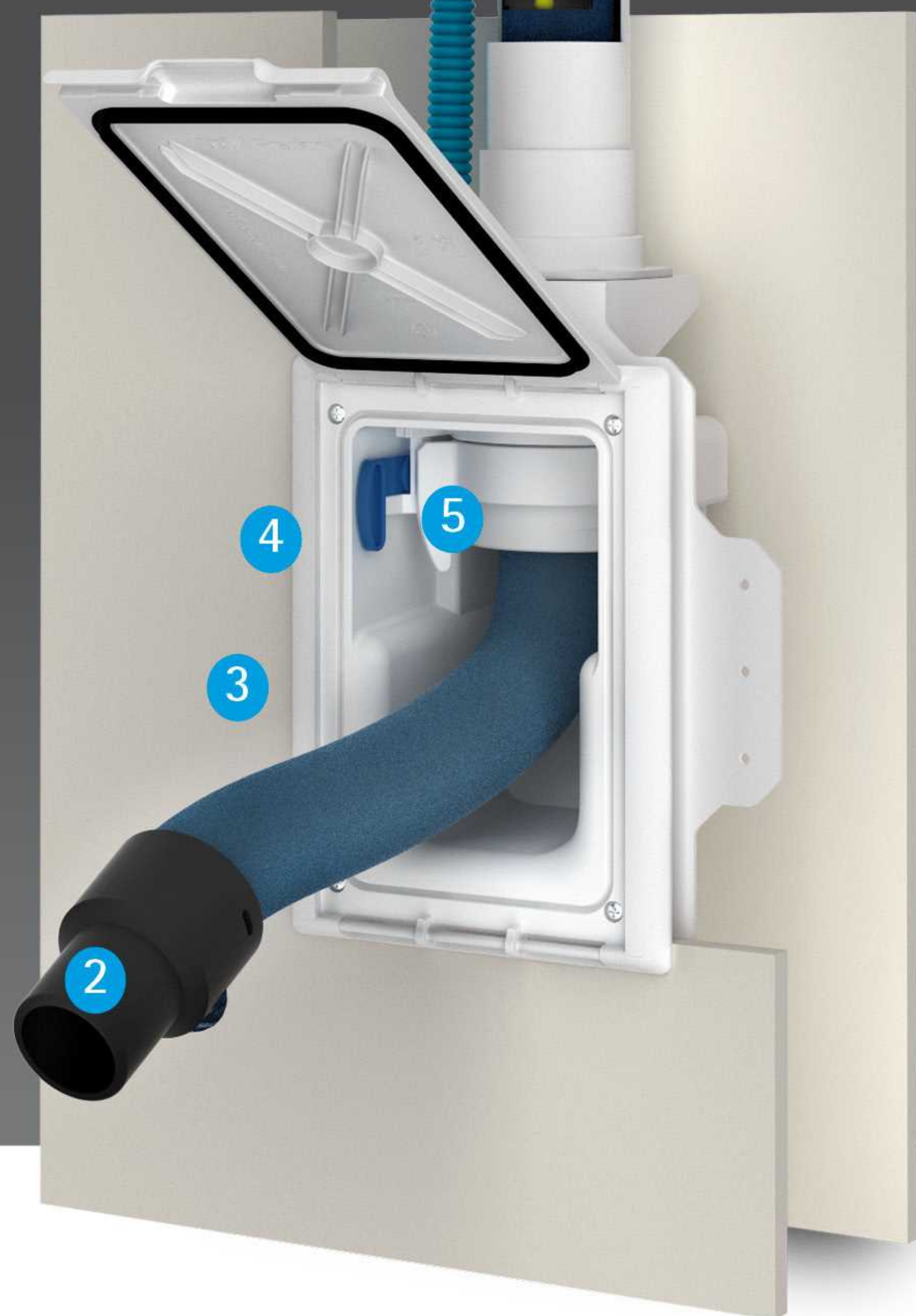
1. **EASY TO USE:** No need to carry, wind-up or put away the hose after cleaning.
2. **FAST:** Even faster cleaning. With a simple gesture the flap is opened, the hose is pulled out and PRATICO is ready to use.
3. **TAKES UP LITTLE SPACE:** The hose is concealed in the wall. There is no need for a cupboard to store it in.



Cleaning has never been so easy.

PRATICO components

1. 12 metre hose, complete with cover for sliding and protection.
2. End connector for connection to the grip.
3. PRATICO socket complete with flap.
4. Lever for switching on central vacuum unit.
5. Lever for locking hose.



Pratico

Operation

With PRATICO cleaning has never been so easy.

Just 4 simple gestures are needed to use PRATICO:

1. Open the flap and extract the quantity of hose required for cleaning.
2. Lock the hose using the dedicated lever.
3. Switch on the central vacuum unit by moving the BLUE lever to ON.*
4. Insert the end connector for the hose into the grip.

Another 4 simple operations are required to conceal PRATICO:

5. With the central vacuum unit still operating, approach the socket and release the grip from the hose.
6. Unlock the hose by moving the lock lever.
7. Obstruct the end connector for the hose with the palm of your hand until it is completely rewound.
8. Switch off the central vacuum unit by closing the flap.*

Quick, easy, clean: Pratico.

*NOTE: the PRATICO Wireless system is also available, in the event that electrical wiring was not laid during the installation of the system.

